

Digital Mapping for Town and Parish Councils

Pear Technology's Ordnance Survey-based maps give local councils an affordable and easy to use management tool for accurately showing asset locations, owned land, location of services, rights of way, plans for events, properties under planning review – every map application you can think of. More flexible and professional-looking

than paper-based copies, the maps also provide an excellent means of communicating information with Council members, the public and between staff.

Access to maps can be controlled and because of their versatility, they transform the quality of information for both Council and public use. Key information often

held by just one or two people can be recorded on a centrally held map, so dependency on individuals is reduced and risk management improved.

Areas and distances can be measured accurately without leaving the office, the maps can be updated easily and they can be linked to spreadsheets and databases. Prints can quickly be produced at any scale.



Typical Applications

Designed for non-specialist users, Pear Technology's software is easy to use. To simplify implementation, we provide a full map preparation service followed by installation, on-site training and on-going technical support.

- » Identification of Council Areas
- » Development of Parish Plans
- » Street Furniture Management
- » Tree Management
- » Playing Field Layouts
- » Cemetery Management
- » Event Planning
- » Sports Field Layout
- » Public Communications
- » Planning Reviews
- » Contract Preparation
- » Allotment Management



Pear Technology Services Ltd.

Tel: 023 9249 9689 Web: www.peartechnology.co.uk



Digital Mapping for Councils

Any basic mapping system requires two components:

Background Map

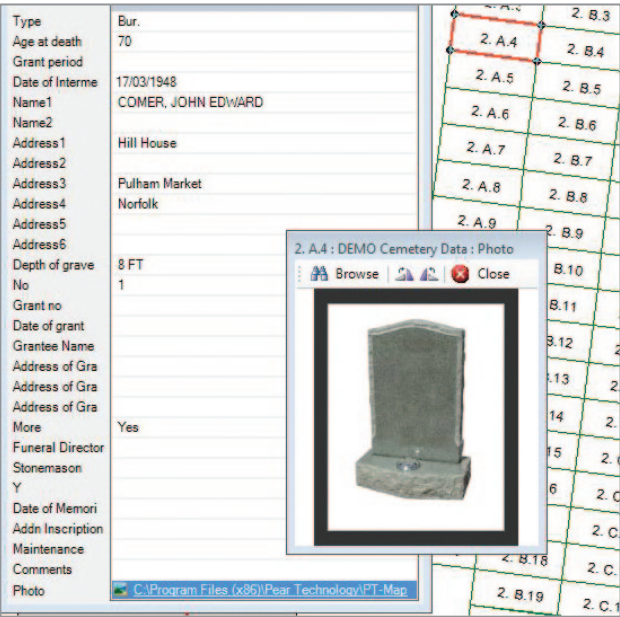
Through Ordnance Survey's Public Sector Mapping Agreement (PSMA), most of their products are freely available to local councils. The MasterMap product used with Pear software is the most detailed, most accurate and best-maintained map data available. We supply this ready for immediate use.

Software

Pear Technology's **PT-Mapper Pro** lets you add your own information to a map, edit it, print it and email it. **MapLink** connects features on the map to your records in Excel, Access or other data sources so that clicking on the map immediately pops up the relevant information. MapLink is particularly useful for the management of assets, trees, cemeteries and allotments.

Screenshot of MapLink software

A digital cemetery map linking to burial records.



Base System

Pear Technology supply a range of modules to suit all parish sizes and complexities, from village to borough and district councils. A basic system comprises:

Background Map

Ordnance Survey MasterMap data. Can cover adjacent parishes as well if you are working in a cluster group or have shared interests. Signing up to the PSMA is simple and we provide a map that is ready for immediate use.

PT-Mapper Pro

An easy to use map editing, viewing and printing piece of software that allows you to add markers for street furniture locations, footpaths, trees and street lamps. In fact, anything you are likely to think of. Maps can be coloured to depict council-owned land, environmental protection areas, emergency access routes, wards etc. You can create layout plans for carnivals, fayres, markets, allotments etc. The same software works for cemetery maps, where we would normally provide the initial map which you then maintain.

MapLink

MapLink provides an easy means of linking maps to records held in Excel, Access and other data sources. Once a link has been created using a simple wizard, clicking on a map object immediately displays the record for that object. The theming tool can be easily applied, enabling objects on the map to display information captured in the linked records in various colours, for a quick and effective way of interpreting your data. Records can be updated from the map, reports generated and printed and the whole or any part of the map printed at any scale. You can save the link and return to it at any time. MapLink is widely used for the management of cemeteries, allotments and council assets.

Additional Modules



Asset Manager

Asset Manager is a database application that can save you and your staff time by simplifying the asset management process whilst ensuring full audit compliance. Maintenance and repairs can be logged and history is retained even if an asset is no longer in use. Able to link to photos and documents.



Cemetery Management

Pear can convert your old paper maps into a modern digital map that can be easily updated and amended. The map can be linked to a simple Excel spreadsheet, to a full cemetery management application or to a web-based search facility for use by the general public.



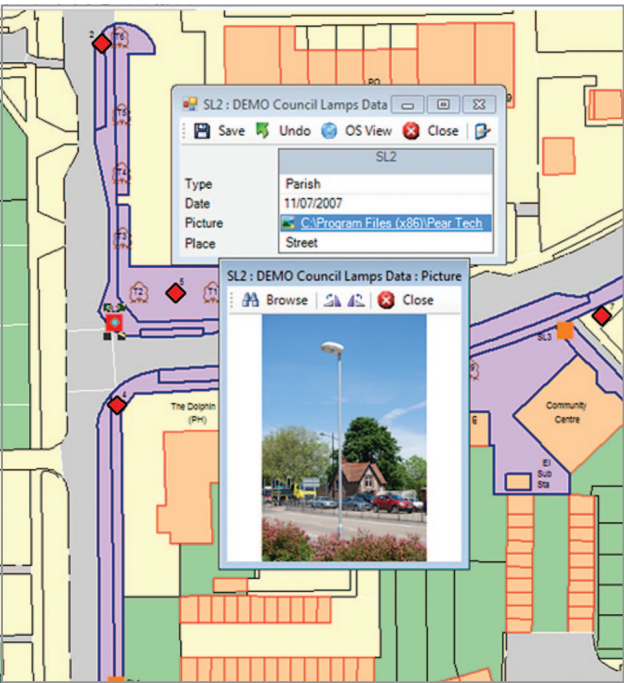
Tree Management

Data from tree surveys can be added to the Pear mapping system reducing the need for a paper copy. The tree location and the survey results can be supplied in digital format. MapLink can then link the survey results to the relevant tree.



On-site Data Capture

Pear supply handheld GPS-enabled computers and software that make on-site mapping of assets, trees and boundaries easy. The PocketGIS software lets users record information about each mapped feature in whatever format and detail that is required. An extremely useful tool for asset management and tree surveys.



A screenshot of an asset map linking to records

About Us

Pear Technology have been suppliers of mapping and GIS software and services since 1995 and have established a reputation for supplying software that is easiest to use in its class and that meets the needs of its users very well. We supply systems to farms, estates, housing associations, tree survey specialists and local government where our customers range from small village parishes to large towns and boroughs. The common factor is that few of our customers are IT-experts, so the focus has always been on supplying software that is straightforward to use whilst still offering excellent functionality, backed up by a professional, friendly technical support service.

Pear Technology have been Licensed Partners with Ordnance Survey since 1996 and are major users of their data.

Our Aim

Because most of our customers are using digital mapping technology for the first time, we aim to make the transition and on-going use of the software as smooth as possible, so we also offer data supply and map preparation services, backed up by a highly competent and friendly customer support team. Our philosophy is that our products should be as open as

possible so that our customers need not feel locked in to our systems. This means that data can be exchanged with other mapping and GIS systems.

Training & Support

Training

We supply products that require minimal instruction, even for non-specialists. However, digital mapping does require some background knowledge. We provide training that is tailored to your needs and carried out either onsite or at our premises. Usually about half-a day is sufficient for novices to start using the systems productively.

Support

We have a reputation for friendly and accessible support. With all our products, we offer technical support, which means that we are only a standard rate phone call away. We also offer technical support via email or remote connection, the choice is yours. Finally, we are constantly developing our software so you are entitled to receive software updates.

Digital Mapping for Town and Parish Councils

Summary

Pear Technology provide a one-stop shop for all mapping and map-associated needs. As well as utilising Ordnance Survey maps for general asset management, our software can be used for cemetery and allotment management and features added to a map can be linked to the relevant records, including pictures and documents. Maps can be emailed, placed on the web-site for public information purposes and sent to principal authorities.

By having separate pieces of software councils can not only personalise their mapping system to suit their needs, but also expand their system over time.

By having a one-stop shop, there is no debate over who to call for help.

Local or Internet-based installations available.



Testimonials

"We mostly use PTMapper Pro and MapLink for asset mapping. I have not only found it easy to use but also very useful as the data is linked to each asset which obviously saves us time. I haven't had any difficulties with the software but any technical issue I have had, I just call up and it gets sorted asap.."

Gemma Bolton, Uckfield Town Council

"The Pear Technology system cost us about £2000 in 2010, including training and the first year's support. It's difficult to quantify monetary savings but the system has enabled us to do our work in a faster, more professional and more responsive way. It's difficult now to imagine not having such a system."

Helen Stewart, Thame Town Council

"Stratton St Margaret Parish Council is responsible for cemeteries, allotments, play areas, open spaces and assets such as dog bins etc. Pear's software has not only helped with the management of all this but is easy to use."

The software provides instant access to a digital map of the parish so that location queries can be resolved almost instantly. The helpline is fast, responsive and friendly."

Paul Russell, Stratton St Margaret Parish Council

Further information

If you have any questions about our software please contact us on **023 9249 9689** or email **info@peartechnology.co.uk**



System Requirements

Pear Technology software will run on a network, as a stand-alone application or via the internet if installed on a "cloud-computing" system. Recommended minimum requirements are Windows XP or later, 2GB RAM, external mouse for laptops. The handheld mobile data capture devices must use Windows Mobile software. The software can run on Apple computers but only if a Windows operating system is also installed.

Pear Technology Services Ltd.

Tel: 023 9249 9689 **Web:** www.peartechnology.co.uk **Email:** info@peartechnology.co.uk

Pear Technology Services Ltd., Unit 31 Broadmarsh Business Centre, Harts Farm Way, Havant, PO9 1HS

