

Drawing areas in Google Earth

If you don't have Google Earth already download it from here-
<http://www.google.com/earth/>

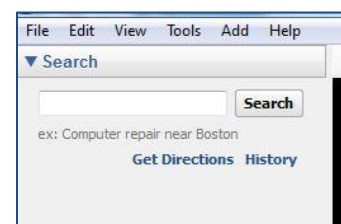
Search

- » Use the search box to find your location
- » Find your exact location and then we can start drawing



Add Polygon

- » Click the 'Add Polygon' button, and up will pop a box.
- » Go to the 'Style, Colour' tab and in the 'Area' category, click on the drop down list and choose 'Outline'.
- » With this done you can start drawing, but you must leave the box open



Drawing

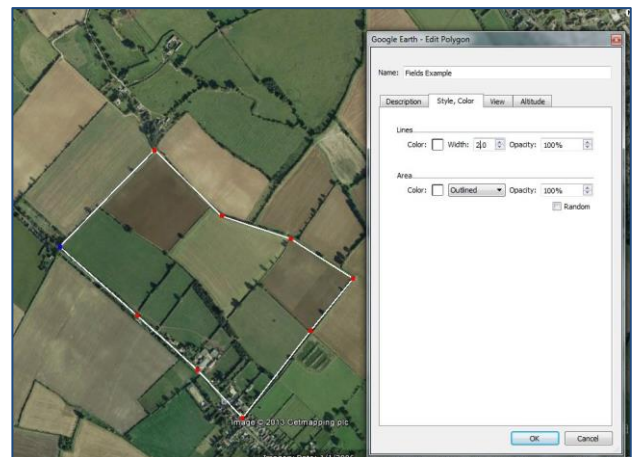
- » Now click on the starting point on the map, and click around the area you require.

Zooming and Panning

- » Scroll up and down on the mouse will to zoom in and out
- » Use the directional keys on the keyboard to pan around the map.

Saving the shape

- » You can 'Name' the area and click OK
- » You will see the layer pop up in the 'Places' bar on the left hand side



Sending the Google Earth KMZ

- » Now either right click on the layer and click 'Email' and email to Pear who whoever the recipient is to be.
- » Alternatively save it to your computer using the 'Save Place As' option when you have right clicked the layer. Once it is saved to your computer you can attach it to an email as usual where it can be opened up on someone else's version of Google Earth or opened in PT-Mapper

Pear Technology Services Ltd.

Tel: 023 9249 9689 Web: www.peartechology.co.uk Email: info@peartechology.co.uk

Pear Technology Services Ltd., Unit 31 Broadmarsh Business Centre, Harts Farm Way, Havant, PO9 1HS

